

SONOREX TECHNIK

RM 112 - Module series

High-power ultrasonic baths and rinsing baths
for aqueous fluids

RM 112 UH:	Ultrasonic bath with heating
RM 112 U:	Ultrasonic bath without heating
RM 112 H:	Rinsing bath with heating, without ultrasound
RM 112:	Rinsing bath without heating, without ultrasound



RM 112 UH

	RM 112 UH	RM 112 U	RM 112 H	RM 112
Code No.	9102 - 40 kHz 9101 - 25 kHz	9104 - 40 kHz 9103 - 25 kHz	9105	9106
Oscillating tank / rinsing tank				
Internal dimensions, l × w × d	600 × 450 × 450/470* mm, *inclined tank bottom			
Filling level mark from the middle of the tank bottom	360 mm			
Upper edge overflow gutter from the middle of the tank bottom	415 mm			
Tank edges	rounded, radius 20			
Capacity	145 l			
Operating volume up to filling level mark	115 l			
Filling volume up to upper edge overflow gutter	130 l			
Tank material	stainless steel AISI 316L, 2 mm, welded			
Outlet / Inlet	3-way ball valve G 1 incl. hose and hose sockets, on the left side; brass, galvanically coated			
Overflow, tightly welded	ball valve G 1 incl. hose socket, on the right side; brass, galvanically coated			
Overflow gutter	one the right side			
Sprinkle tube	on the left side			
Tank bottom	inclined			

	RM 112 UH	RM 112 U	RM 112 H	RM 112
--	-----------	----------	----------	--------

Ultrasound

Ultrasonic peak power corresponds to 4 times ultrasonic nominal power	4000 W		-	
Ultrasonic nominal power	1000 W		-	
Ultrasonic frequency	40 kHz or 25 kHz		-	
Pulse function	✓			
Oscillating systems	20 pieces at tank bottom		-	
Control	turning knob			-
Time setting	1 – 15 min and continuous operation		-	

Temperature control

Adjustable temperature range	30 – 80 °C	-	30 – 80 °C	-
Heating power	4800 W	-	4800 W	-

Housing

External dimensions, l × w × h	780 × 610 × 800 mm			
Housing material	stainless steel AISI 304			
Handles	on the sides			
Degree of protection	IP 32			
Feet	4 height adjustable feet			

Power supply

Mains supply	400 V 3N~ (± 10 %), 50/60 Hz			
Power consumption	5.8 kW	1.0 kW	4.9 kW	-
Current consumption per phase	max. 15,3 A	max. 4.4 A	max. 10.5 A	-
Leakage current	< 3.5 mA	< 3.5 mA	< 3.5 mA	-
Mains cable	3 m, fixed at the unit, with three-phase plug CEKON 16 A			-

Environmental conditions

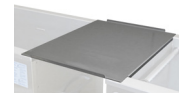
Permissible ambient temperature	5 – 40 °C			
Permissible relative humidity to 31 °C	80 %			
Permissible relative humidity to 40 °C	50 %			

Shipping information

Weight	net	74 kg	69 kg	62 kg	57 kg
	gross	102 kg	97 kg	90 kg	85 kg
Packing, l × w × h	1 special pallet 1100 × 750 × 1100 mm				

Accessories

Type	Code No.	Description
MK 110	8423	insert basket, stainless steel load up to 20 kg internal dimensions 530 x 410 x 90 mm, l x w x d mesh size 12.5 x 12.5 mm
MK 110 S	8476	insert basket, stainless steel load up to 40 kg internal dimensions 530 x 410 x 90 mm, l x w x d mesh size 12.5 x 12.5 mm
MK 110 B	8417	insert basket, stainless steel, applicable for lifting device MB load up to 20 kg internal dimensions 530 x 410 x 90 mm, l x w x d mesh size 12.5 x 12.5 mm
MK 110 BS	8481	insert basket, stainless steel, applicable for lifting device MB load up to 40 kg internal dimensions 530 x 410 x 90 mm, l x w x d mesh size 12.5 x 12.5 mm
MD 110	8446	lid, stainless steel
TB 110	8403	drop plate, stainless steel, between two tanks if using a MB

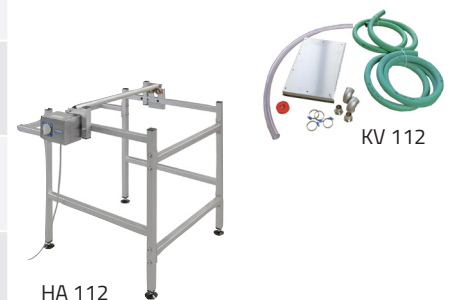


Supplementary equipment

WG 110-2	8520	rack for 2 tanks, in connection with MB 110 B
WG 110-3	8521	rack for 3 tanks, in connection with MB 110 B
WG 110-4	8522	rack for 4 tanks, in connection with MB 110 B
MB 110	8310	lifting device with oscillation, for one unit
MB 110 B	8314	lifting device with oscillation, in connection with WG 110
KV 112	8456	cascade tube between two tanks
HA 112	8497	planing head holder, stainless steel



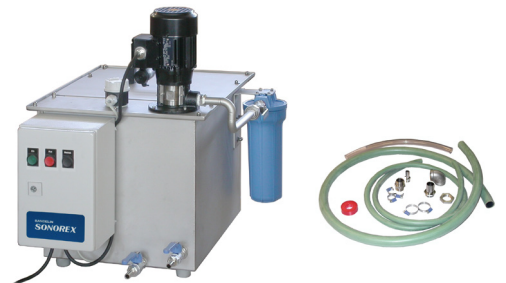
MB 110 B with WG 110-2



HA 112

Peripheral units

Type	Code No.	Description
FA 110	8611	filtration with pre- and fine filter incl. connection kit
OX 110	8603A	oil separator incl. connection kit
WA 110	8635A	DI-water-preparation device incl. connection kit
TO 110	8337	trough dryer, internal dimensions 600 x 500 x 350 mm, l x w x d



Caution!
Do not use combustible liquids, acids, chemicals containing chloride ions and household cleaners.
Do not place items on the tank bottom.
Recommendation: Special cleaning agents TICKOPUR

Distributed by:



A.D. Jansen Zwolle B.V.
Faradaystraat 21
8013PH Zwolle - NL
Tel: +31 (0) 384550646
klantenservice@djaky.com
www.djaky.com

Subject to technical alterations without notice. Dimensions subject to production tolerances.
Illustrations exemplary, not true to scale. Decoration products are not included in delivery.

2298a GB/2020-06

BANDELIN electronic GmbH & Co. KG
Heinrichstraße 3 – 4
12207 Berlin
Deutschland

www.bandelin.com
info@bandelin.com
☎ : +49 30 768 80-0
☎ : +49 30 773 46 99

Zertifiziert nach
ISO 9001
ISO 13485